



ACCURATE FLIGHT PLANS.  
DESIGNED FOR CORPORATE AVIATION.

**Online Flight Planning and  
Support Services for Business Aviation**

# Web Flight Planning

The Honeywell Global Data Center (GDC) presents the next generation of online flight support services with our advanced Web Flight Planning system. Featuring user-friendly point-and-click menus combined with robust routing capabilities, GDC's Web Flight Planning system enables business aircraft operators to create and file flight plans from any personal computer connected to the internet.

## Simplifying Pilot Workload

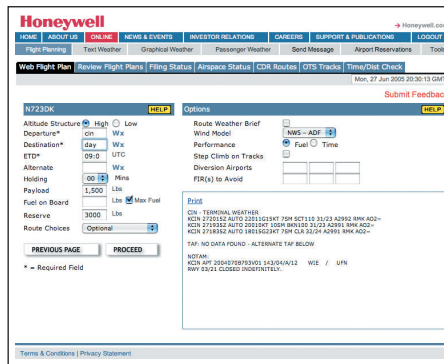
Our intuitive Web Flight Planning system is configurable with operator preferences, meaning that pilots only need to enter information that is unique to a particular flight. Flight plans are based upon current wind and temperature information and use aircraft performance data provided by the aircraft's manufacturer. Among other innovative features, pilots may optimize flight plans for best fuel efficiency or shortest flight time and up-to-date weather reports for departure, destination or alternate airports can be

## Find out more

For further information on how Web Flight Planning can enhance your flight operations, contact our Service Support team at (888) 634-3330 or e-mail us at [gfo@mygdc.com](mailto:gfo@mygdc.com). Additional information is also available online at [www.myGDC.com](http://www.myGDC.com)

## Honeywell Aerospace

15001 NE 36th Street  
Redmond, WA 98052  
Toll Free: 1-888-634-3330  
International: 1-425-885-8100  
[www.honeywell.com](http://www.honeywell.com)



quickly obtained while flight planning without changing pages.

Oceanic contingency planning has never been easier. Our new system uses the most current wind information to automatically calculate drift-down performance and Equal Time Points between diversionary airports, simplifying decision making in the event of a loss of cabin pressurization or an engine-out emergency while flying in oceanic areas. The system calculates optimum performance recommendations for such events based on accurate performance data provided by the aircraft manufacturer.

## Expanded Functionality

Honeywell's advanced web-based system provides accurate routing, precise performance calculations, and increased flexibility with features designed specifically for corporate aircraft operators. These value-added features include expanded drift-down reports, multiple wind models (including historical winds), precise aircraft performance data, and updated route selections such as National Route Program (NRP) routes, Pacific Tracks, Polar Tracks, and time saving FAA Coded Departure Routes (CDR).

## Comprehensive Solution

The new Web Flight Planning system will enable business aircraft to operate more efficiently while saving time and money. Easy, secure access is provided via the internet and GDC's cost-effective subscription plans provide access to a variety of other value-added flight support features designed especially for business aviation.

These services include textual and graphic-based weather products, passenger weather briefings, and worldwide flight following. No matter your flight support needs, Honeywell's GDC delivers innovative and real-time solutions to help your flight crews make the right decisions on the ground and during flight.

## Why Honeywell?

- Over 20 years of corporate aviation flight planning experience
- Industry leader in flight support services
- Experienced staff available 24-hours per day
- Cost-effective subscription plans
- Fleet discounts available
- Worldwide VHF and satellite datalink communications

## Web Flight Planning Advantages

- Powerful and flexible online flight planning system
- Quickly generate and file flight plans for destinations worldwide
- Intuitive point-and-click menus
- Advanced route selection tools
- OEM aircraft performance data

# Honeywell

A60-0837-000-003  
February 2010  
© 2010 Honeywell International Inc.