



ENHANCES SITUATIONAL AWARENESS AND
WEATHER AVOIDANCE CAPABILITY

**AFIS® Graphical Weather
for the NZ-2000 FMS**

AFIS® Graphical Weather for the NZ-2000 FMS

Global Data Center

- Weather designed for aviation
- Uplinked via VHF or SATCOM
- Does not interfere with in-flight telephone
- Service designed to keep operating costs down

Latest NZ-2000 software 6.0 and CD-820 configuration

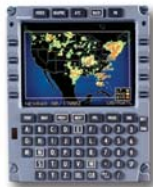
- Simple, cost-effective upgrade
- No phone charges! AFIS weather graphics are transmitted via normal AFIS communications links



AFIS DMU



NZ-2000



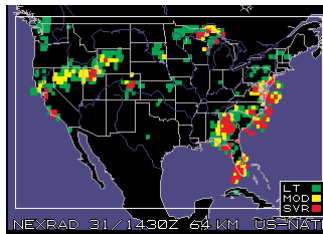
CD-820

TAKES ADVANTAGE OF EXISTING FMS INSTALLATIONS

Honeywell Aerospace

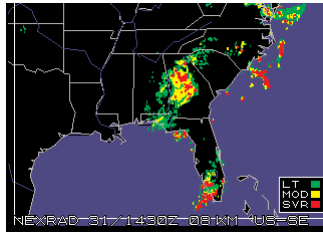
1944 E. Sky Harbor Circle
 Phoenix, AZ 85034
 Domestic: 1.800.601.3099
 International: 1.602.365.3099
 www.honeywell.com

A60-0853-000-001
 May 2010
 © 2010 Honeywell International Inc.



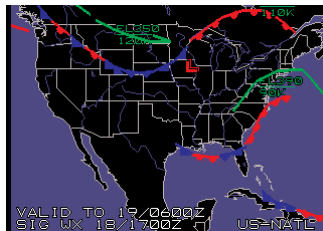
U.S. National/Regional NEXRAD

- Cell Tops with movement
- 64 KM - 8 KM grid resolution
- All charts time-stamped



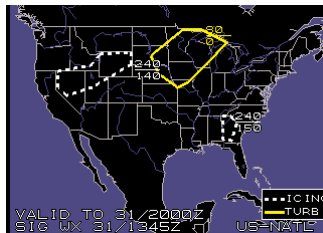
- U.S. National
- U.S. Regional
- 200 NM scale
- 100 NM scale

Area NEXRAD



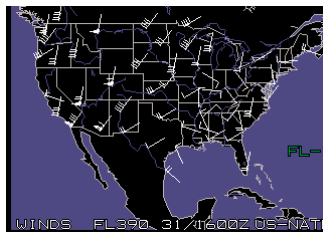
- U.S. National
- System fronts
- Jet stream location, altitude and speed
- High and low pressure areas

Significant Weather



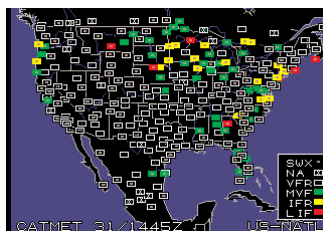
- Hurricane plotting
- Icing
- National convection weather forecast
- Turbulence

Significant Weather



- United States
- International
- Surface to approximately FL530

Winds Aloft



- U.S. National
- U.S. Regional
- Airports color-coded to depict VFR/IFR
- Similar to weather depiction chart, but updated hourly

CATMET Categorical METAR

Honeywell