



**Comprehensive solutions
to enhance the value and
performance of your aircraft.**

Increase the performance, efficiency and resale value of your Challenger 600/601 with Honeywell's industry-leading products and integrated service solutions.

Flight Management Systems/Navigation



Third Flight Management System

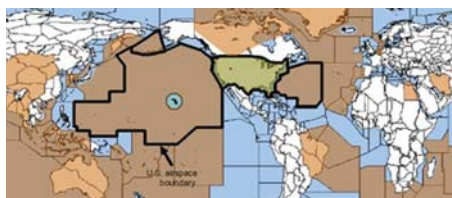
Reliable dispatch – don't miss another oceanic flight

- Meet oceanic dispatch requirements for dual FMS

Third Inertial Reference Unit

Assured dispatch for oceanic flights

- Meet oceanic dispatch requirements for dual attitude sources



FMS 6.1 Software Update

The next stage in efficient and precise navigation starts here – open the doors to emerging technology

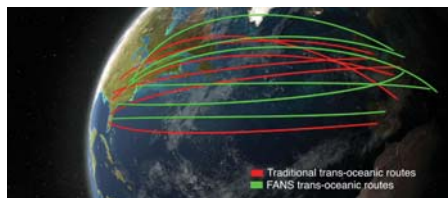
- FANS Data Link
- RNP SAAAR
- WAAS LPV



Required Navigation Performance (RNP)

More airports, more airspace, more often – saves fuel and time while improving safety

- Increased access to airports and airspace
- Money saving, efficient operations
- Enhanced safety with reliable, repeatable and clearly defined flight paths



Future Air Navigation System (FANS) w/CD-820

Climb faster and go farther on less fuel with FANS-enabled technologies

- Shorter trans-oceanic routes
- More on-time departures
- Reduced step-climbing
- Timely re-routes
- Continuous gradual descents
- Available first half of 2009
CD-820 LCD FMS Control Display Unit upgrade is a key to FANS operations
- Dedicated ATC key fully supports CPDLC messaging



Wide Area Augmentation System with Vertical Guidance (WAAS LPV)

Take the safe approach – 1000 ILS look-alike LPV approaches to near Category I minimums

- No ILS required



DL-950 Data Loader

Get on the stick – the latest navigation now fits in the palm of your hand

- No more care and feeding of floppy disks
- Form fit replacement with current data loader
- Faster, more reliable downloads
- Receive database updates through Internet or email

Display Systems



Primus Epic® CDS/R with Advanced File Graphics Server (AFGS)

See more clearly... Now – LCD cockpit upgrade with electronic charts, maps and XM® graphical uplinked weather

- Improved situational awareness and safety
- Reduced weight, power and LRUs
- Confirmed growth path for Primus Epic display enhancements

Cabin Systems



Select 200 Personal Control Unit (PCU)

In control with just one touch

- Easy upgrade from MHL and MHS controllers
- Color, icon-based touchscreens – universal for all cultures and languages
- Removable bezels – provides multiple designs with same core switch panel
- Simple drop-in replacement

High Speed Communications Systems



JetMap® II

Track where you are in time and space and stay posted on world events with the latest in moving map technology

- Full moving-map functions
- Worldwide to street level maps
- Live news, weather and sports updates
- Built-in Iridium transceiver to get the latest information on the fly



Cup Holder Media Dock



- Facilitates iPod®/MP3 integration for current C-Series operators
- Fully integrated audio/video distribution for iPod and other MP3 devices throughout the entire cabin
- Spill-resistant, silicone rubber boot insert for when not in use
- Removable device that fits into existing cup holder locations



Satellite Television

Entertainment at FL350* – AIS-2000 keeps passengers connected, productive and entertained with live satellite TV all over the world

- Coverage in North America, Europe and the Middle East
- Up to six receivers for independent cabin viewing
- Integrated with cabin system controls

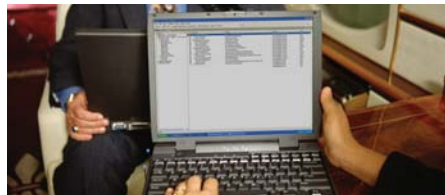
*requires OneView™ satellite television service



Communications Gateway System

Do more with your Satcom System with an onboard network and IP PBX

- Wireless access
- BlackBerry connectivity
- Multiple voice and communication paths
- Data compression/acceleration

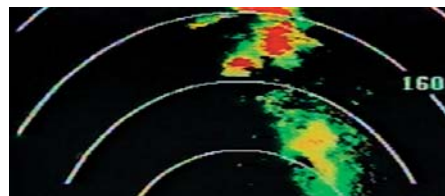


HD-710 Inmarsat High Speed Data System

Global Connectivity – improve your productivity at FL450

- Bandwidth on demand (up to 432 kbps)
- Surf the web and send/receive email
- Low cost, high quality voice calls
- Simple and straightforward upgrades to existing Honeywell Satcom systems

Safety Systems



Primus® 880 Weather Radar

More power – penetrate the storm farther and see it more clearly with 10,000 kW

- Most powerful radar available today
- 100% reliability improvement, weight savings and enhanced performance



SmartRunway™ & SmartLanding™

Peace of Mind...on the ground or in the air. Both systems provide aural, and now visual alerting (on terrain display), to minimize runway incursions and excursions

- SmartRunway is the latest evolution of our Runway Awareness and Advisory System (RAAS) with additional advisories (“Take Off Flaps” and “Taxiway Landing”) and new muting capability on the ground using the Glideslope cancel button
- SmartLanding adds new functionality to promote stabilized approaches and minimize long landings. It is a “quiet” system if all is normal
- Simple software upgrade to MK V & MK VII EGPWS-equipped aircraft
- Procurable separately or as a package and can be used to upgrade current RAAS
- Increased customization to suit specific operational needs



XM® Weather – XMD-157 XM Weather Receiver

Get real-time graphical weather* with Honeywell's XMD-157 XM receiver

- Graphically display NEXRAD, satellite cloud height, convection, turbulence, winds aloft, SIGMETs, METARs and TAFs in the continental U.S.
- Vertical profile for winds aloft and clear air turbulence on EFBs

*requires WINN™ graphical weather service

Services



Global Data Center

- Concierge flight planning service
- Intuitive web flight planning
- Datalink messaging and communications
- WINN™ graphical weather services
 - WINN XM weather for Primus Epic® CDS/R or EFB for continental U.S. via the XMD-157 receiver
 - WINN global weather on the EFB via satcom



International Trip Support

Ensuring the safety of your travelers and compliance with regulations is our primary concern. Travel with peace of mind knowing that you will be cared for every step of the way

- Simple invoicing and per-leg pricing
- Ground handling and permits
- Customs and security
- Hotel arrangements
- Long range weather
- Worldwide concierge flight service
- Prearranged fuel

Honeywell Aerospace

1944 East Sky Harbor Circle
Phoenix, AZ 85034

U.S. Toll Free: 1.800.601.3099

International Tel: 602.365.3099

EMEA Toll Free: 00.800.601.3099

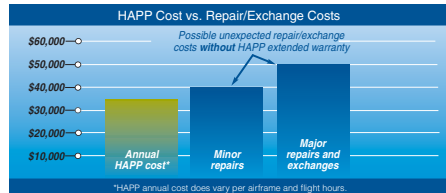
EMEA Direct Dial: 420.234.625.500

www.honeywell.com



Cabin Services

- Satcom communication services provided by partner Satcom Direct
- Engineering support for communication applications set up
- One number for ground to air calling
- OneView™ service for AIS-2000 Satellite Television
 - 24/7 coverage in North America, Europe and the Middle East



Extended Warranty – Avionics, Satcom (HAPP)

Control your costs – a known fixed cost covers all your Honeywell avionics

- 24/7 AOG emergency services
- Full coverage on exchange and repair
- Paid air-freight for any repair, loaner or exchange
- No charge loaner equipment
- Fixed pricing with annual contract

Mechanical Systems



36-150 Auxiliary Power Unit

Superior starting performance – the 36-150 APU uses a high efficiency compressor for greater on-wing reliability and lower operating costs

- Improved main engine starting
- Enhanced high altitude electrical power capacity
- Ported shroud design creates up to 10 dBA reduction in ground noise

Honeywell