

KASE

Apr t

SID

STAR

Appr

Noise

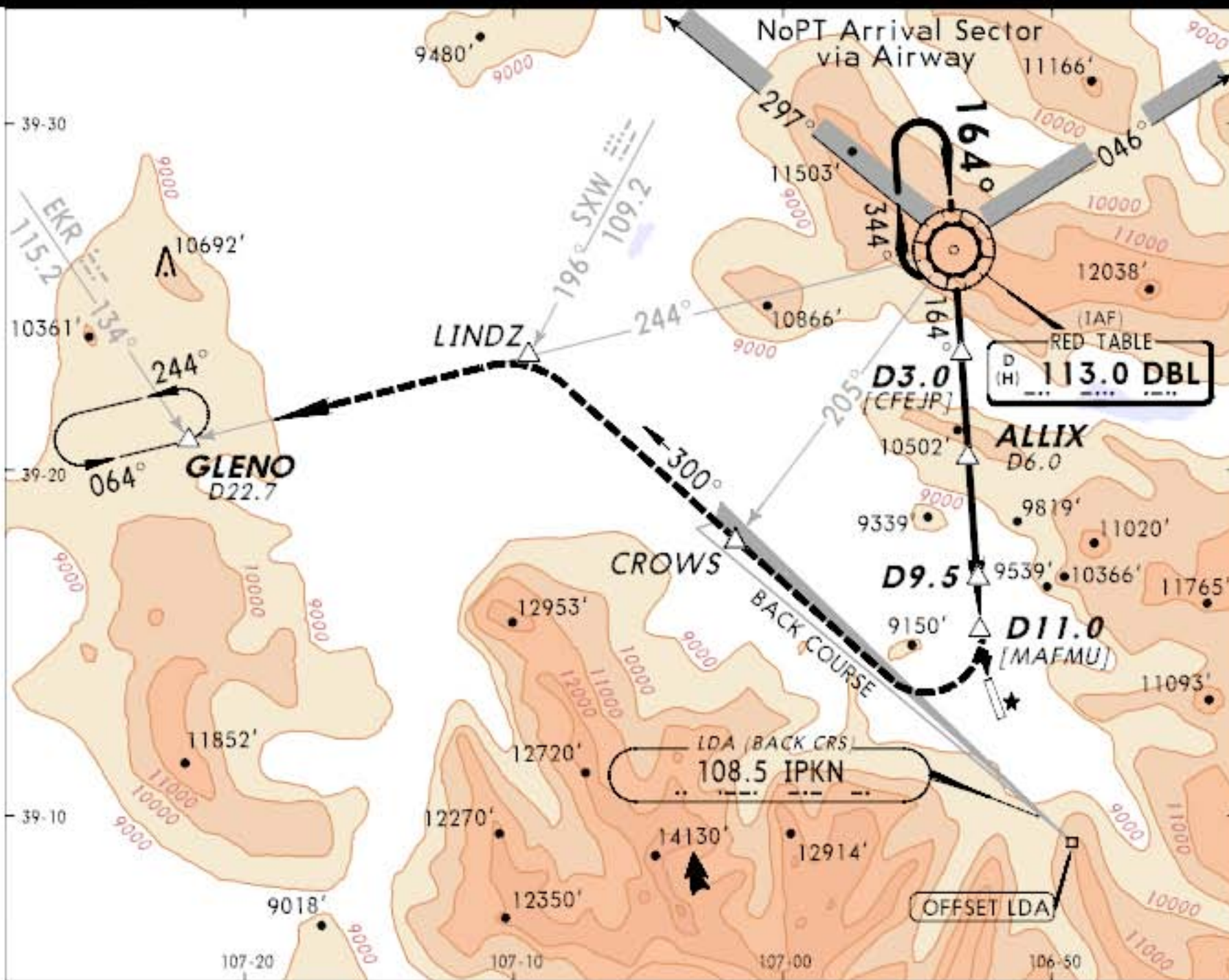
NOTAM

Airsp

Chart

VOR DME OR GPS-C

Header Profile Minima



KASE/ASE
-PITKIN CO/SARDY

JEPPESEN

ASPEN, COLO

30 MAY 08 (13-1)

CAT A, B & C

VOR DME or GPS-C

ATIS (ASOS when Twr Inop)		*ASPEN Approach (R)		DENVER Center (R)		*ASPEN Tower		*Ground	
120.4		123.8		125.35 when App Inop.		CTAF 118.85		121.9	
VOR DBL	Final Apch Crs	Minimum Alt	MDA(H)	Refer to Minimu		Apt Elev		<p>MSA DBL VOR</p>	
113.0	164°	ALLIX 12200' (4380')				7820'			
<p>BRIEFING STRIP</p> <p>MISSED APCH: Climbing RIGHT turn to 14000' via 300° heading to intercept and proceed via IPKN LDA NORTHWEST course (300°) and outbound on DBL VOR R-244 to GLENO INT/D22.7 and hold.</p> <p>Alt Set: INCHES Trans level: FL 180 Trans alt: 18000'</p> <p>1. Dual VHF navigation receivers required. 2. Obtain local altimeter setting on CTAF; if not received, procedure not authorized. 3. Procedure not authorized at night. 4. Descent angle 9.69°, TCH 55'. 5. VGSI and descent angles not coincident. 6. Pilot controlled lighting 118.85.</p>									