

# Primus Epic® – Cessna Sovereign Options



**Upgrades for the Primus Epic  
equipped Cessna Sovereign  
Flight Deck**

**Honeywell**

Primus Epic does a lot more with a value package of selectable flight deck upgrades. Options for Cessna Sovereign Primus Epic equipped aircraft.



# These options add even more value to the

## Communication and Worldwide Weather

The Honeywell Communication Management Function (CMF) provides routing via VHF or SATCOM for:

- AFIS text-based weather
- Flight planning/messaging
- Honeywell Global Data Center (GDC) services: text-based AFIS service, Weather Information Network (WINN) graphical weather
- Viewing of current radar, winds and satellite weather
- Weather overlaid on INAV display significantly improves situational awareness
- Third VHF radio for two-way data link capability
- Requires customer registration and service agreement with GDC

## Charts and Maps

The charts and maps function provides the ability to view Jeppesen charts (Approach, SID, STARS, Airport Diagrams, etc.) and uplink weather on the cockpit displays.

- Shows aircraft position and can be rotated, zoomed, split and printed (with optional flight deck printer)
- Data is updated on 14-day cycle using Honeywell's Integrated Navigation Data Service (INDS)
- Shows current aircraft position on the airport diagram while on the ground
- Improved situational awareness with weather overlaid on INAV display



Charts and maps

## HF1050 Radio Package

The smaller, lighter and more reliable Honeywell HF1050 radio provides:

- Oceanic communications
- Tuning that is stored in non-volatile memory with 200 Watt peak envelope power
- Stand-alone antenna coupler allows locating near antenna
- Redundant back-up for reliable dispatch with dual HF radio option

## Uplink Weather

- Weather Information Network (WINN) provides unique three-dimensional weather avoidance anywhere in the world
- Flight plans can be overlaid on all graphical weather images – pan and zoom into specific areas of interest
- Displays are automatically updated with the most up-to-the-minute weather information – even when not currently selected on the display



HF-1050 Radio



# ever-capable and highly-praised flight deck

## Category II Landings (CAT II)

- CAT II allows aircraft operation at Type II airports
- Reduced minimums will minimize weather related approach disruptions
- Reduces Decision Height (DH) down to a 100 foot (30 meter) minimums and Runway Visual Range (RVR) to not less than 1200 feet (370 meters)

## Enhanced Surveillance (XPDR Diversity Mode S)

- Transponder change to meet European mandates in increasingly dense airspace

## Second Automatic Direction Finder (ADF)

- Increased availability from backup ADF
- Improved dispatch reliability where ADF navigation is required

**Options are available today for your Cessna Sovereign to enhance your flying experience.**

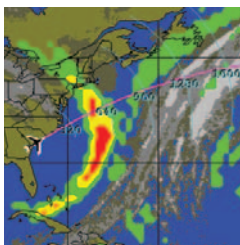
## TOLD Performance Database

- The TOLD option adds Sovereign-specific take off and landing performance data to the Honeywell FMS
- Allows the flight crew to compute takeoff and landing V-speeds and required field lengths

## Lightning Detection System

The LSZ-860 Lightning Sensor System:

- Provides radar redundancy – only a second weather radar would provide more data
- Offers complete weather avoidance – detects weather information radar cannot:
  - *Pre-flight assist* – 360° surrounding view provides critical weather avoidance information prior to taxi and commitment to specific flight plan
  - *Building thunderstorms* – spots destructive turbulence and electrical activity long before weather radar can
  - *Cloud-to-cloud* – identifies an inviting flight path between cells containing electrical activity
  - *Behind the rain* – displays electrical activity in areas where weather radar has fully attenuated and can no longer penetrate



Weather Information Network



Lightning detection system

## **Global customer support**

Honeywell's avionics are based on proven technology providing exceptionally high reliability and simplified maintenance. To help ensure optimal operation conditions, Honeywell provides comprehensive installation consultation and support tailored to the unique needs of each operator. Additionally, our product support services include regularly scheduled maintenance and pilot training courses and support documentation. When service is needed, our customer engineers and service centers are strategically located around the world to provide efficient, responsive support. Honeywell remains unsurpassed in the scope and variety of services, which range from SPEX exchange of line replaceable units to personalized service contracts designed to fit the resources and circumstances of every operation regardless of size or business nature.

## **Honeywell Aerospace**

1944 E. Sky Harbor Circle  
Phoenix, AZ 85034  
U.S. Toll Free: 1.800.601.3099  
International Tel: 602.365.3099  
EMEA Toll Free: 00.800.601.30999  
EMEA Direct Dial: 420.234.625.500  
[www.honeywell.com](http://www.honeywell.com)

A60-0973-000-000  
September 2007  
© 2007 Honeywell International Inc.

The Honeywell logo is displayed in a bold, red, sans-serif font.