



**Advanced display for  
Gulfstream GIV and GV  
aircraft, without the downtime**

# Introducing Primus Elite™ – The high-definition flight deck upgrade.



## Honeywell's Primus Elite liquid crystal display (LCD) flight deck upgrade is specifically designed for SPZ-8400, 8500 and selected SPZ-8000 series avionics systems

The Primus Elite flight deck retrofit delivers the most sophisticated and user friendly display upgrade available today, featuring powerful graphics, advanced features and the improved clarity of liquid crystal display (LCD) technology. Safety enhancements include XM® graphical weather, Jeppesen electronic charts and maps, and video display capability, all enabled through a cursor control interface.

Highly reliable LCDs replace your existing CRT (cathode ray tube) displays and add graphical capability to your flight deck, but without the downtime, expense or additional pilot training needed with a traditional full cockpit replacement.

### Find Out More

To learn more about Honeywell Primus Elite, please visit [www.honeywellprimuselite.com](http://www.honeywellprimuselite.com)

### Honeywell Aerospace

1944 E. Sky Harbor Circle  
Phoenix, AZ 85034

U.S. Toll Free: 1.800.601.3099

International Tel: 602.365.3099

EMEA Toll Free: 00.800.601.3099

EMEA Direct Dial: 420.234.625.500

[www.honeywell.com](http://www.honeywell.com)

### Greater passenger comfort Enhanced situational awareness And opportunities to grow

One of a pilot's primary responsibilities is to ensure passenger comfort – and the smoothest ride possible. The Primus Elite flight deck incorporates advanced weather solutions via XM® graphical weather, enabling greater route planning and weather avoidance. Primus Elite also enables smarter and faster decision making while reducing pilot workload, by incorporating an upgraded graphical user interface.

The Primus Elite flight deck upgrade provides growth capabilities for Honeywell's award-winning SmartView™ synthetic vision system, IntuVue® weather radar, and an advanced map display.

### Increase efficiency and reliability with Primus Elite

Honeywell understands that operational efficiencies and safety are not mutually exclusive. That's why the Primus Elite flight deck upgrade is designed to not merely add aircraft value, but also to increase the safety, efficiency and reliability of your aircraft at the same time.

### Improved Passenger Safety & Comfort

- Electronic charts and maps with geo-referenced aircraft positioning
- XM® graphical weather
- Video display capabilities

### Reduced Cost of Ownership

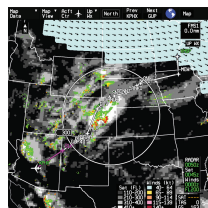
- 2x display system reliability
- Paperless terminal-area charts and maps
- Maintains current display formats
- Minimal pilot training
- Installed weight savings
- Cooling requirements diminished
- Honeywell Avionics Protection Plan (HAPP) savings

### New Generation Technology

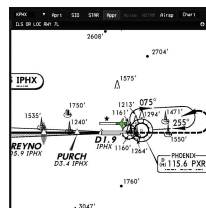
- Honeywell's award-winning SmartView™
- IntuVue® weather radar interface
- Advanced map display

### Worldwide Customer Support

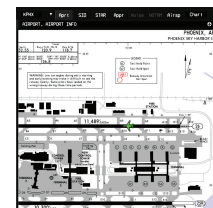
Honeywell's avionics are based on proven technology and provide exceptionally high reliability and simplified maintenance. Our product support services include regularly scheduled maintenance and pilot training courses. When service is needed, our global network of customer support engineers and service centers are ready to respond quickly to your needs.



Graphical uplink weather



Integrated electronic charts



# Honeywell