



**The high-definition retrofit
flight deck for Gulfstream
GIV and GV aircraft**

Introducing Primus Elite™ – the high-definition flight deck upgrade.



Honeywell's Primus Elite liquid crystal display (LCD) flight deck upgrade is specifically designed for SPZ-8000, 8400 and 8500 series avionics systems.

The Primus Elite flight deck retrofit delivers the powerful graphics of liquid crystal display (LCD) technology, simply and affordably. You'll enjoy many of the same features and safety benefits as the most sophisticated cockpits in operation today, including XM® graphical weather, Jeppesen electronic charts and maps, and video display capability—all enabled through a cursor control interface.

Enhanced situational awareness through intuitive display of information.

As a pilot, one of your primary responsibilities is to fly your aircraft from origin to destination safely and efficiently. The Primus Elite flight deck incorporates an upgraded graphical user interface,

enabling smarter and faster decision making while reducing pilot workload. Highly reliable LCDs replace your existing CRT (cathode ray tube) displays adding graphical capability to your flight deck not possible with CRTs. This capability comes standard with Primus Elite and without the downtime, expense or additional pilot training needed with a traditional full cockpit replacement.

The Primus Elite flight deck upgrade also provides growth capabilities for Honeywell's award-winning SmartView™ synthetic vision system and paperless terminal area charts and maps. Additionally, Primus Elite provides growth capabilities for future communication, navigation, surveillance/air traffic management (CNS/ATM) functions.

Primus Elite—your next step toward increased efficiency and reliability.

Honeywell understands that operational efficiencies and safety are not mutually exclusive. As a result, you'll find that all your requirements are met with the Primus Elite flight deck upgrade. You will not only add aircraft value, but increase the safety, efficiency and reliability of your aircraft at the same time.

Improved Safety

- Electronic charts and maps
- XM® graphical weather
- Video display capabilities

Reduced Cost of Ownership

- Reduces aircraft weight
- Reduces cooling requirements
- 2x Display system reliability
- Maintains current display formats
- Minimal pilot training

Growth

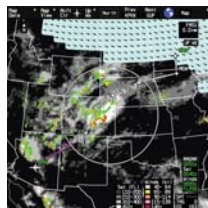
- Honeywell's award-winning SmartView™
- Advanced map display
- Paperless terminal area charts and maps

Worldwide Customer Support

Honeywell's avionics are based on proven technology and provide exceptionally high reliability and simplified maintenance. Our product support services include regularly scheduled maintenance and pilot training courses. When service is needed, our global network of customer support engineers and service centers are ready to respond quickly to your needs.

Find Out More

To learn more about Honeywell Primus Elite, please visit www.honeywellprimuselite.com.



Graphical uplink weather



Integrated electronic charts



Honeywell Aerospace

1944 E. Sky Harbor Circle

Phoenix, AZ 85034

U.S. Toll Free: 1.800.601.3099

International Tel: 602.365.3099

EMEA Toll Free: 00.800.601.3099

EMEA Direct Dial: 420.234.625.500

www.honeywell.com

A60-1031-000-002

December 2009

© 2009 Honeywell International Inc.

Honeywell